

# MALIBU II 12" ROUGH-IN

Two-piece Toilet, CEL

NSC-3250

WaterSense® & cUPC Certificate

## Features:

- Vitreous china two-piece toilet with skirted trapway
- Chair-height (16-1/2")
- MicroGlaze™ anti-microbial stain resistant glaze
- 12" (305mm) rough-in
- Rimless wash – large twin jets with open rim

## EcoQUATTRO™ Flushing System:

- High-performance, gravity flush
- 1.28 gallons (4.8 liters) per flush – EPA WaterSense, high-efficiency toilet (HET)
- Fully glazed, 2-1/8" internal trapway
- Oversized 3" flush valve
- Large 9" x 7" water surface area and optimized rim jets, for an exceptionally clean bowl

## Accessories Included:

- Silent close, quick release seat and cover
- Solid metal trip lever (polished chrome finish)
- Bolt alcove cover tiles (set of 2)

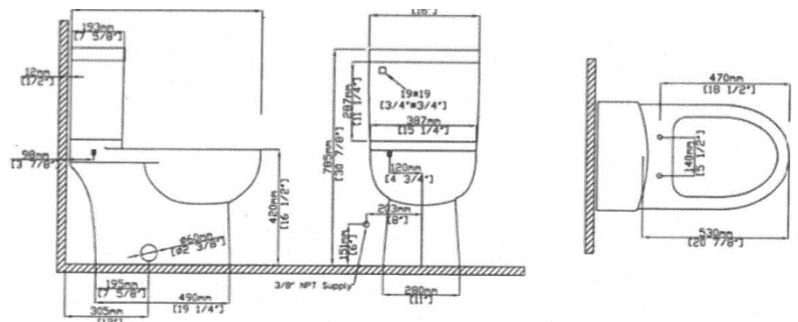
## Quality Assurance:

- Factory flush-tested
- 1 year warranty, parts only

*\*Dimensions are nominal and may vary within the range of tolerance per NSI Standard A112.19.2. These measurements are subject to change. No responsibility is assumed for the use of superseded or voided pages.*



## Dimensions:



Available exclusively at:

**CHESTER BUILDING SUPPLIES**

902-275-5512 | [chester@castleatlantic.ca](mailto:chester@castleatlantic.ca)

**NOVA SCOTIA BUILDING SUPPLIES**

902-624-8328 | [blockhouse@castleatlantic.ca](mailto:blockhouse@castleatlantic.ca)

## MALIBU II

One-piece Toilet, RF

NSC-6360

*WaterSense® & cUPC Certificate*

### Features:

- Vitreous china one-piece toilet
- Chair-height (16-1/2")
- MicroGlaze™ anti-microbial stain resistant glaze
- 12" (305mm) rough-in
- Ultra compact – less than 25" front to back

### EcoQUATTRO™ Flushing System:

- High-performance, gravity flush
- 1.28 gallons (4.8 liters) per flush – EPA WaterSense, high-efficiency toilet (HET)
- Fully glazed, 2-1/8" internal trapway
- Oversized 3" flush valve
- Large 9" x 7" water surface area and optimized rim jets, for an exceptionally clean bowl

### Accessories Included:

- Silent close, quick release seat and cover
- Solid metal trip lever (polished chrome finish)
- Bolt alcove cover tiles (set of 2)

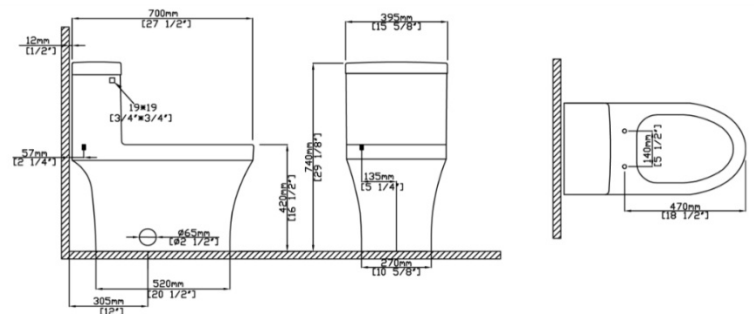
### Quality Assurance:

- Factory flush-tested
- 1 year warranty, parts only

*\*Dimensions are nominal and may vary within the range of tolerance per NSI Standard A112.19.2. These measurements are subject to change. No responsibility is assumed for the use of superseded or voided pages.*



### Dimensions:



Available exclusively at:

**CHESTER BUILDING SUPPLIES**

902-275-5512 | [chester@castleatlantic.ca](mailto:chester@castleatlantic.ca)

**NOVA SCOTIA BUILDING SUPPLIES**

902-624-8328 | [blockhouse@castleatlantic.ca](mailto:blockhouse@castleatlantic.ca)

## MUSE II

One-piece Toilet, CEL

NSC-6690

*WaterSense® & cUPC Certificate*

### Features:

- Vitreous china one-piece toilet
- Chair-height (16-1/2")
- MicroGlaze™ anti-microbial stain resistant glaze
- 12" (305mm) rough-in
- Compact elongated bowl
- Rimless wash – large twin jets with open rim to facilitate a powerful flush and better hygiene

### EcoQUATTRO™ Flushing System:

- High-performance, gravity flush
- 1.28 gallons (4.8 liters) per flush – EPA WaterSense, high-efficiency toilet (HET)
- Fully glazed, 2-1/8" internal trapway
- Oversized 3" flush valve
- Large 9" x 7" water surface area and optimized rim jets, for an exceptionally clean bowl

### Accessories Included:

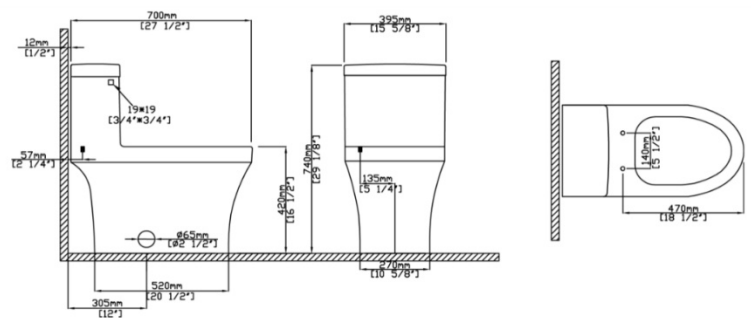
- Silent close, quick release seat & cover
- Solid metal trip lever (polished chrome finish)
- Bolt alcove cover tiles (set of 2)

### Quality Assurance

- Factory flush-tested
- 1 year warranty, parts only



### Dimensions:



*\*Dimensions are nominal and may vary within the range of tolerance per NSI Standard A112.19.2. These measurements are subject to change. No responsibility is assumed for the use of superseded or voided pages.*



Available exclusively at:

**CHESTER BUILDING SUPPLIES**

902-275-5512 | [chester@castleatlantic.ca](mailto:chester@castleatlantic.ca)

**NOVA SCOTIA BUILDING SUPPLIES**

902-624-8328 | [blockhouse@castleatlantic.ca](mailto:blockhouse@castleatlantic.ca)

# MALIBU II TOP FLUSH

One-piece Toilet, CEL

NSC-6250

*WaterSense® & cUPC Certificate*

## Features:

- Vitreous china one-piece toilet
- Chair-height (16-1/2")
- MicroGlaze™ anti-microbial stain resistant glaze
- 12" (305mm) rough-in
- Compact elongated bowl
- Rimless wash – large twin jets with open rim to facilitate a powerful flush and better hygiene

## EcoQUATTRO™ Flushing System:

- High-performance, gravity flush
- 1.28 gallons (4.8 liters) per flush – EPA WaterSense, high-efficiency toilet (HET)
- Fully glazed, 2-1/8" internal trapway
- Oversized 3" flush valve
- Large 9" x 7" water surface area and optimized rim jets, for an exceptionally clean bowl

## Accessories Included:

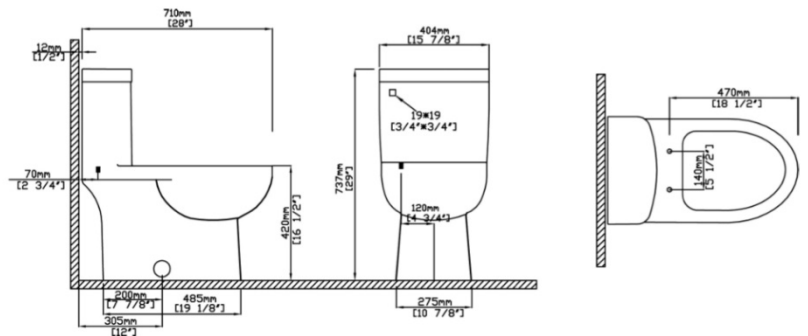
- Silent close, quick release seat & cover
- Top flush button
- Bolt alcove cover tiles (set of 2)

## Quality Assurance

- Factory flush-tested
- 1 year warranty, parts only



## Dimensions:



*\*Dimensions are nominal and may vary within the range of tolerance per NSI Standard A112.19.2. These measurements are subject to change. No responsibility is assumed for the use of superseded or voided pages.*



Available exclusively at:

**CHESTER BUILDING SUPPLIES**

902-275-5512 | [chester@castleatlantic.ca](mailto:chester@castleatlantic.ca)

**NOVA SCOTIA BUILDING SUPPLIES**

902-624-8328 | [blockhouse@castleatlantic.ca](mailto:blockhouse@castleatlantic.ca)

## TOP FLUSH

Two-piece Toilet, CEL

NSA2188

WaterSense® & cUPC Certificate

### Features:

- White Vitreous china
- Round front
- Floor mount
- Bowl height 16.34"
- 12" (305mm) rough-in
- 1.28 GPF water consumption
- ADA compliant
- Dimensions: 30" x 17.32" x 31.5"



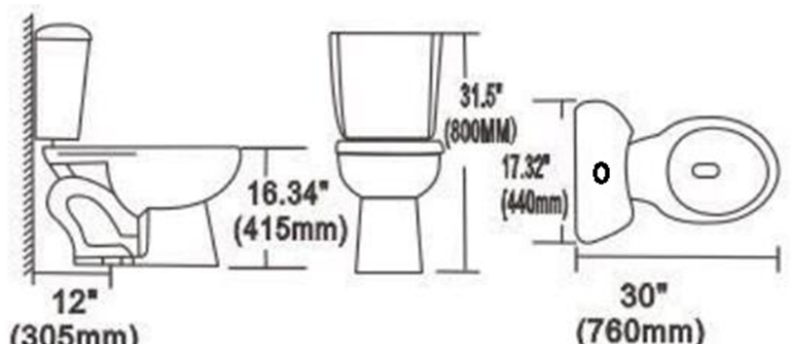
### Accessories Included:

- Soft, slow down seat & cover
- Top flush button
- Bolt alcove cover tiles (set of 2)

### Quality Assurance

- Factory flush-tested
- 1 year warranty, parts only

### Dimensions:



*\*Dimensions are nominal and may vary within the range of tolerance per NSI Standard A112.19.2. These measurements are subject to change. No responsibility is assumed for the use of superseded or voided pages.*



Available exclusively at:

**CHESTER BUILDING SUPPLIES**

902-275-5512 | [chester@castleatlantic.ca](mailto:chester@castleatlantic.ca)

**NOVA SCOTIA BUILDING SUPPLIES**

902-624-8328 | [blockhouse@castleatlantic.ca](mailto:blockhouse@castleatlantic.ca)

## SIDE FLUSH

Two-piece Toilet, CEL  
NSA2246

WaterSense® & cUPC Certificate

### Features:

- White Vitreous china
- Elongated bowl
- Floor mount
- Bowl height 16.34"
- 12" (305mm) rough-in
- 1.28 GPF water consumption
- ADA compliant
- Dimensions: 30" x 17.32" x 31.5"



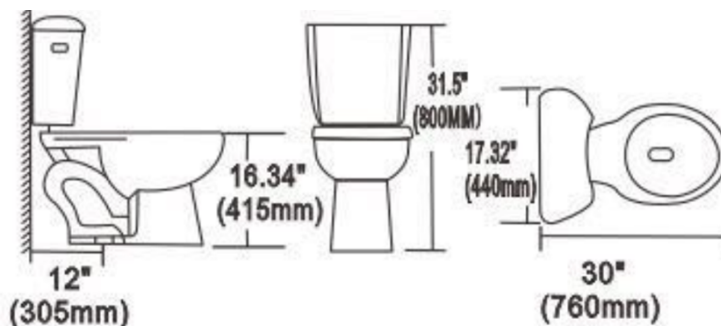
### Accessories Included:

- Soft, slow down seat & cover
- Side flush handle
- Bolt alcove cover tiles (set of 2)

### Quality Assurance

- Factory flush-tested
- 1 year warranty, parts only

### Dimensions:



*\*Dimensions are nominal and may vary within the range of tolerance per NSI Standard A112.19.2. These measurements are subject to change. No responsibility is assumed for the use of superseded or voided pages.*



Available exclusively at:

**CHESTER BUILDING SUPPLIES**

902-275-5512 | [chester@castleatlantic.ca](mailto:chester@castleatlantic.ca)

**NOVA SCOTIA BUILDING SUPPLIES**

902-624-8328 | [blockhouse@castleatlantic.ca](mailto:blockhouse@castleatlantic.ca)